

# 217 STATION ROAD

DRAYTON | PORTSMOUTH | PO6 1PY



## OFFERS IN EXCESS OF £250,000 Freehold

A four bedroom house located within the catchment areas for Court Lane primary and Springfield Senior schools. The property has a west facing rear garden and two allocated parking spaces. The accommodation comprises a living room and kitchen / diner to the ground floor. Upstairs there two double and two single bedrooms as well as a family bathroom. The house is double glazed and gas centrally heated.

- Four Bedroom House
- Living Room
- Kitchen / Diner
- Family bathroom
- Westerly Facing Rear Garden
- Two Allocated Parking Spaces
- Double Glazing
- Gas Central Heating

FRY &  
KENT

## KEY FACTS

The property is Freehold EPC rating - C Council Tax band - C Stamp Duty payable @ full asking price - £3250 Total Approx Floor Area - 80.3 sq m/ 864 sq ft



## Station Road, Portsmouth

Approximate Gross Internal Area  
80.3 sq m / 864 sq ft

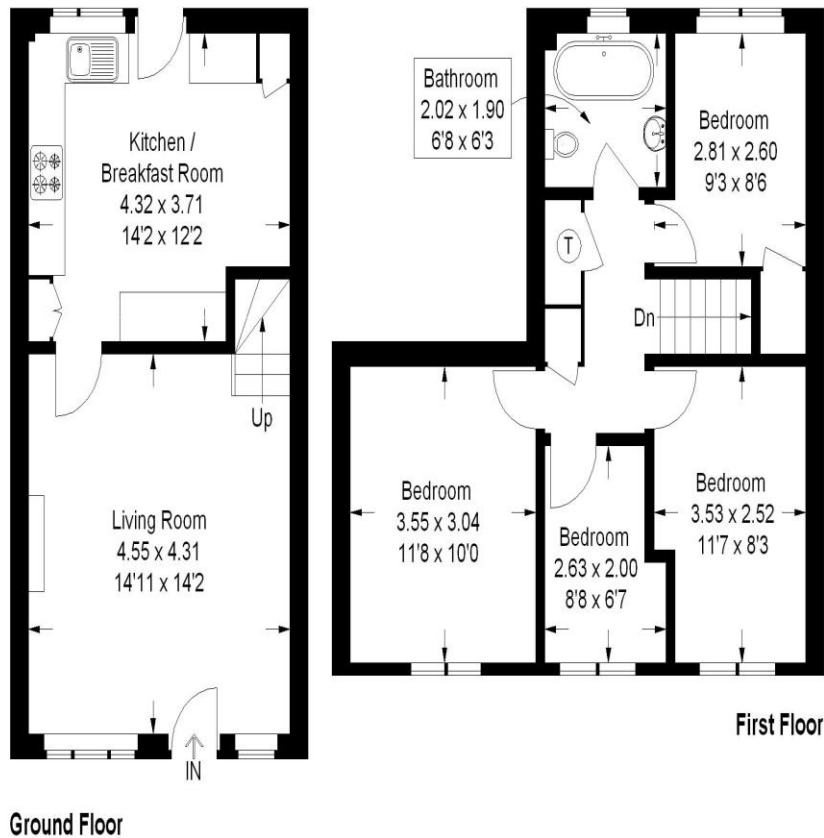


Illustration for identification purposes only, measurements are approximate, not to scale. (ID263335)

**Southsea Sales & Lettings**  
7/9 Stanley Street,  
Southsea PO5 2DS  
Sales Tel – 023 9281 5221  
Lettings Tel – 023 9282 2400  
Fax – 023 9273 0554

[sales@fryandkent.com](mailto:sales@fryandkent.com)

**Property Management**  
12 Marmion Road,  
Southsea PO5 2BA  
Tel - 023 9282 2300

[lettings@fryandkent.com](mailto:lettings@fryandkent.com)

**Old Portsmouth Sales & Lettings**  
The Seagull, 13 Broad Street,  
Old Portsmouth PO1 2JD  
Tel - 023 9235 5366

[propertymanagement@fryandkent.com](mailto:propertymanagement@fryandkent.com)

**Drayton Sales & Lettings**  
139 Havant Road,  
Drayton PO6 2AA  
Sales & Lettings  
Tel – 023 9221 0101  
Fax – 023 9220 1710

[mayfairoffice@fryandkent.com](mailto:mayfairoffice@fryandkent.com)

**Mayfair Office Sales & Lettings**  
Cashel House, 15 Thayer  
Street, London W1U 3JT  
Tel - 0870 112 7099  
Fax – 020 7467 5339

[www.fryandkent.com](http://www.fryandkent.com)



The services or appliances, plumbing, heating or electric installations have not been tested by the selling agent so we are unable to confirm that they are in working order. Whilst we endeavour to make our sales details accurate and reliable, they should not be relied upon as statements or representations of fact, and do not constitute any part of an offer contract. The seller does not make or give, nor do we or our employees have the authority to make or give, any representation or warranty in relation to the property.